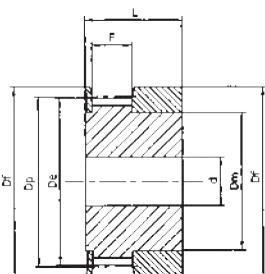


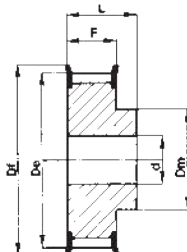


PULEGGE DENTATE PER CINGHIE HTD®

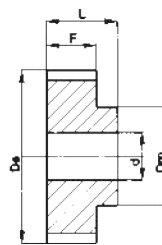
Timing belt pulleys HTD®
HTD® Zahnriemenscheiben
Poulies dentées HTD®
Poleas para correas dentadas HTD®



Tipo / Type
1F



Tipo / Type
6F



Tipo / Type
6

HTD® 3M-06

| Caratteristiche Features Merkmale Características | Codice Code symbol Bezeichnung Code symbole Numero de fabrica | Nostro codice Our code Unser Code Notre code Nuestro código | Tipo Type Typ. Type Tipo | Codice flangia Flange code Bordscheiben Typ Code flasque Código brida | N. denti N. of teeth Zähnezahl N. bre de dents Cantidad de dientes | Dp | De | Df | Dm | F | L | Foro stock Stock bore Vor bohrung Alesage en stock Agujero de stock | Peso Weight / Gewicht Poids / Peso Kg |
|--|---|---|--------------------------------------|---|--|-------|-------|------|------|------|------|---|--|
| Alluminio / Aluminium / Aluminium / Aluminium / Aluminio 6082 T6 UNI 9006/4 | 10 3M 06 | 03M0610 | 1F | FL501 | 10 | 9,55 | 8,79 | 13,0 | 6,0 | 7,2 | 14,5 | 4 | |
| | 12 3M 06 | 03M0612 | 1F | FL502 | 12 | 11,46 | 10,70 | 15,0 | 8,0 | 7,2 | 14,5 | 4 | |
| | 14 3M 06 | 03M0614 | 1F | FL503 | 14 | 13,37 | 12,61 | 16,0 | 9,5 | 7,2 | 14,5 | 4 | |
| | 153M 06 | 03M0615 | 1F | FL516 | 15 | 14,32 | 13,56 | 17,5 | 10,5 | 7,2 | 14,5 | 4 | |
| | 16 3M 06 | 03M0616 | 6F | FL504 | 16 | 15,28 | 14,52 | 17,5 | 10,0 | 9,8 | 17,5 | 4 | |
| | 18 3M 06 | 03M0618 | 6F | FL505 | 18 | 17,19 | 16,43 | 20,0 | 11,0 | 9,8 | 17,5 | 6 | |
| | 20 3M 06 | 03M0620 | 6F | FL517 | 20 | 19,10 | 18,34 | 23,0 | 13,0 | 9,8 | 17,5 | 6 | |
| | 21 3M 06 | 03M0621 | 6F | FL518 | 21 | 20,05 | 19,29 | 25,0 | 13,0 | 9,8 | 17,5 | 6 | |
| | 22 3M 06 | 03M0622 | 6F | FL518 | 22 | 21,01 | 20,25 | 25,0 | 13,0 | 9,8 | 17,5 | 6 | |
| | 24 3M 06 | 03M0624 | 6F | FL518 | 24 | 22,92 | 22,16 | 25,0 | 13,0 | 9,8 | 17,5 | 6 | |
| | 26 3M 06 | 03M0626 | 6F | FL508 | 26 | 24,83 | 24,07 | 28,0 | 16,0 | 9,8 | 17,5 | 6 | |
| | 28 3M 06 | 03M0628 | 6F | FL509 | 28 | 26,74 | 25,98 | 32,0 | 18,0 | 9,8 | 17,5 | 6 | |
| | 30 3M 06 | 03M0630 | 6F | FL509 | 30 | 28,65 | 27,89 | 32,0 | 20,0 | 9,8 | 17,5 | 6 | |
| | 32 3M 06 | 03M0632 | 6F | FL510 | 32 | 30,56 | 29,80 | 36,0 | 22,0 | 9,8 | 17,5 | 6 | |
| | 36 3M 06 | 03M0636 | 6F | FL519 | 36 | 34,38 | 33,62 | 39,0 | 26,0 | 10,3 | 18,0 | 6 | |
| | 40 3M 06 | 03M0640 | 6F | FL513 | 40 | 38,20 | 37,44 | 42,0 | 28,0 | 10,3 | 18,0 | 6 | |
| | 44 3M 06 | 03M0644 | 6F | FL520 | 44 | 42,02 | 41,26 | 48,0 | 33,0 | 10,3 | 18,0 | 6 | |
| senza flangia / without flanges ohne Flanschen / sans flasques sin tapetas | 48 3M 06 | 03M0648 | 6 | - | 48 | 45,84 | 45,08 | - | 33,0 | 10,3 | 18,6 | 8 | |
| | 60 3M 06 | 03M0660 | 6 | - | 60 | 57,30 | 56,54 | - | 33,0 | 10,3 | 18,6 | 8 | |
| | 72 3M 06 | 03M0672 | 6 | - | 72 | 68,75 | 67,99 | - | 33,0 | 10,3 | 18,6 | 8 | |

Pulegge dentate per cinghie HTD® / Timing belt pulleys HTD®
HTD® Zahnriemenscheiben / Poulies dentées HTD®
Poleas para correas dentadas HTD®

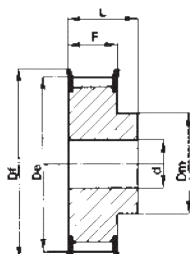


HTD® 3M-09

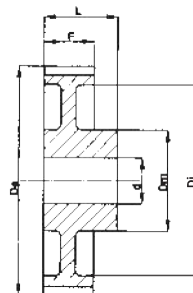
| Caratteristiche Features Merkmale Características | | Codice Code symbol Bezeichnung Code symbole Numero de fabrica | Nostro codice Our code Unser Code Notre code Nuestro código | Tipo Type Typ Type Tipo | Codice flangia Flange code Bordscheiben Typ Code flasque Código brida | N. denti N. of teeth Zähnezahl N. bre de dents Cantidad de dientes | Dp | De | Df | Dm | F | L | Foro stock Stock bore Vor bohrung Alésage en stock Agujero de stock | Peso Weight / Gewicht Poids / Peso Kg |
|--|--|---|---|-------------------------------------|---|--|-------|-------|------|------|------|------|---|--|
| Alluminio / Aluminium / Aluminium / Aluminium / Aluminio 6082 T6 UNI 9006/4 | con flangia / with flanges mit Flanges / avec flasques con tapetas | 10 3M 09 | 03M0910 | 1F | FL501 | 10 | 9,55 | 8,79 | 13,0 | 6,0 | 10,2 | 17,5 | 4 | 0,004 |
| | | 12 3M 09 | 03M0912 | 1F | FL502 | 12 | 11,46 | 10,70 | 15,0 | 8,0 | 10,2 | 17,5 | 4 | 0,006 |
| | | 14 3M 09 | 03M0914 | 1F | FL503 | 14 | 13,37 | 12,61 | 16,0 | 9,5 | 10,2 | 17,5 | 4 | 0,007 |
| | | 15 3M 09 | 03M0915 | 1F | FL516 | 15 | 14,32 | 13,56 | 17,5 | 10,5 | 10,2 | 17,5 | 4 | 0,008 |
| | | 16 3M 09 | 03M0916 | 6F | FL504 | 16 | 15,28 | 14,52 | 17,5 | 10,0 | 12,8 | 20,6 | 4 | 0,007 |
| | | 18 3M 09 | 03M0918 | 6F | FL505 | 18 | 17,19 | 16,43 | 20,0 | 10,6 | 12,8 | 20,6 | 6 | 0,008 |
| | | 20 3M 09 | 03M0920 | 6F | FL517 | 20 | 19,10 | 18,34 | 23,0 | 12,4 | 12,8 | 20,6 | 6 | 0,010 |
| | | 21 3M 09 | 03M0921 | 6F | FL518 | 21 | 20,05 | 19,29 | 25,0 | 13,0 | 12,8 | 20,6 | 6 | 0,013 |
| | | 22 3M 09 | 03M0922 | 6F | FL518 | 22 | 21,01 | 20,25 | 25,0 | 13,0 | 12,8 | 20,6 | 6 | 0,014 |
| | | 24 3M 09 | 03M0924 | 6F | FL518 | 24 | 22,92 | 22,16 | 25,0 | 13,0 | 12,8 | 20,6 | 6 | 0,016 |
| | | 26 3M 09 | 03M0926 | 6F | FL508 | 26 | 24,83 | 24,07 | 28,0 | 16,0 | 12,8 | 20,6 | 6 | 0,018 |
| | | 28 3M 09 | 03M0928 | 6F | FL509 | 28 | 26,74 | 25,98 | 32,0 | 18,0 | 12,8 | 20,6 | 6 | 0,024 |
| | | 30 3M 09 | 03M0930 | 6F | FL509 | 30 | 28,65 | 27,89 | 32,0 | 20,0 | 12,8 | 20,6 | 6 | 0,028 |
| | | 32 3M 09 | 03M0932 | 6F | FL510 | 32 | 30,56 | 29,80 | 36,0 | 22,0 | 12,8 | 20,6 | 6 | 0,032 |
| | | 36 3M 09 | 03M0936 | 6F | FL519 | 36 | 34,38 | 33,62 | 39,0 | 26,0 | 13,4 | 22,2 | 6 | 0,045 |
| | 40 3M 09 | 03M0940 | 6F | FL513 | 40 | 38,20 | 37,44 | 42,0 | 28,0 | 13,4 | 22,2 | 6 | 0,055 | |
| | 44 3M 09 | 03M0944 | 6F | FL520 | 44 | 42,02 | 41,26 | 48,0 | 33,0 | 13,4 | 22,2 | 6 | 0,074 | |
| | senza flangia / without flanges / ohne Flanschen sans flasques / sin tapetas | 48 3M 09 | 03M0948 | 6 | | 48 | 45,84 | 45,08 | - | 33,0 | 13,4 | 22,2 | 8 | 0,074 |
| | | 60 3M 09 | 03M0960 | 6 | | 60 | 57,30 | 56,54 | - | 33,0 | 13,4 | 22,2 | 8 | 0,106 |
| | | 72 3M 09 | 03M0972 | 6 | | 72 | 68,75 | 67,99 | - | 33,0 | 13,4 | 22,2 | 8 | 0,145 |

HTD® 3M-15

| Caratteristiche Features Merkmale Características | | Codice Code symbol Bezeichnung Code symbole Numero de fabrica | Nostro codice Our code Unser Code Notre code Nuestro código | Tipo Type Typ Type Tipo | Codice flangia Flange code Bordscheiben Typ Code flasque Código brida | N. denti N. of teeth Zähnezahl N. bre de dents Cantidad de dientes | Dp | De | Df | Dm | F | L | Foro stock Stock bore Vor bohrung Alésage en stock Agujero de stock | Peso Weight / Gewicht Poids / Peso Kg |
|--|--|---|---|-------------------------------------|---|--|-------|-------|------|------|------|------|---|--|
| Alluminio / Aluminium / Aluminium / Aluminium / Aluminio 6082 T6 UNI 9006/4 | con flangia / with flanges mit Flanges / avec flasques con tapetas | 10 3M 15 | 03M1510 | 1F | FL501 | 10 | 9,55 | 8,79 | 13,0 | 6,0 | 17,0 | 26,0 | 4 | 0,006 |
| | | 12 3M 15 | 03M1512 | 1F | FL502 | 12 | 11,46 | 10,70 | 15,0 | 8,0 | 17,0 | 26,0 | 4 | 0,008 |
| | | 14 3M 15 | 03M1514 | 1F | FL503 | 14 | 13,37 | 12,61 | 16,0 | 9,5 | 17,0 | 26,0 | 4 | 0,010 |
| | | 15 3M 15 | 03M1515 | 1F | FL516 | 15 | 14,32 | 13,56 | 17,5 | 10,5 | 17,0 | 26,0 | 4 | 0,012 |
| | | 16 3M 15 | 03M1516 | 6F | FL504 | 16 | 15,28 | 14,52 | 17,5 | 10,0 | 19,5 | 26,0 | 4 | 0,010 |
| | | 18 3M 15 | 03M1518 | 6F | FL505 | 18 | 17,19 | 16,43 | 20,0 | 10,6 | 19,5 | 26,0 | 6 | 0,012 |
| | | 20 3M 15 | 03M1520 | 6F | FL517 | 20 | 19,10 | 18,34 | 23,0 | 12,4 | 19,5 | 26,0 | 6 | 0,014 |
| | | 21 3M 15 | 03M1521 | 6F | FL518 | 21 | 20,05 | 19,29 | 25,0 | 13,0 | 19,5 | 26,0 | 6 | 0,016 |
| | | 22 3M 15 | 03M1522 | 6F | FL518 | 22 | 21,01 | 20,25 | 25,0 | 13,0 | 19,5 | 26,0 | 6 | 0,018 |
| | | 24 3M 15 | 03M1524 | 6F | FL518 | 24 | 22,92 | 22,16 | 25,0 | 13,0 | 19,5 | 26,0 | 6 | 0,020 |
| | | 26 3M 15 | 03M1526 | 6F | FL508 | 26 | 24,83 | 24,07 | 28,0 | 16,0 | 19,5 | 26,0 | 6 | 0,027 |
| | | 28 3M 15 | 03M1528 | 6F | FL509 | 28 | 26,74 | 25,98 | 32,0 | 18,0 | 19,5 | 26,0 | 6 | 0,030 |
| | | 30 3M 15 | 03M1530 | 6F | FL509 | 30 | 28,65 | 27,89 | 32,0 | 20,0 | 19,5 | 26,0 | 6 | 0,035 |
| | | 32 3M 15 | 03M1532 | 6F | FL510 | 32 | 30,56 | 29,80 | 36,0 | 22,0 | 19,5 | 26,0 | 6 | 0,042 |
| | 36 3M 15 | 03M1536 | 6F | FL519 | 36 | 34,38 | 33,62 | 39,0 | 26,0 | 20,0 | 30,0 | 6 | 0,060 | |
| | 40 3M 15 | 03M1540 | 6F | FL513 | 40 | 38,20 | 37,44 | 42,0 | 28,0 | 20,0 | 30,0 | 6 | 0,075 | |
| | 44 3M 15 | 03M1544 | 6F | FL520 | 44 | 42,02 | 41,26 | 48,0 | 33,0 | 20,0 | 30,0 | 6 | 0,095 | |
| | senza flangia / without flanges / ohne Flanschen sans flasques / sin tapetas | 48 3M 15 | 03M1548 | 6 | - | 48 | 45,84 | 45,08 | - | 33,0 | 20,0 | 30,0 | 8 | 0,103 |
| | | 60 3M 15 | 03M1560 | 6 | - | 60 | 57,30 | 56,54 | - | 33,0 | 20,0 | 30,0 | 8 | 0,150 |
| | | 72 3M 15 | 03M1572 | 6 | - | 72 | 68,75 | 67,99 | - | 33,0 | 20,0 | 30,0 | 8 | 0,212 |



Tipo / Type
6F



Tipo / Type
6W



HTD® 5M-09

| Caratteristiche Features Merkmale Características | Codice Code symbol Bezeichnung Code symbole Numero de fabrica | Nostro codice Our code Unser Code Notre code Nuestro código | Tipo Type Typ Type Tipo | Codice flangia Flange code Bordscheiben Typ Code flasque Código brida | N. denti N. of teeth Zähnezahl N. bre de dents Cantidad de dientes | Dp | De | Df | Dm | Di | F | L | Foro stock Stock bore Vor bohrung Alesage en stock Agujero de stock | Peso Weight / Gewicht Poids / Peso Kg |
|--|---|---|-------------------------------------|---|--|--------|--------|------|------|-----|------|------|---|--|
| Acciaio / Steel / Stahl Acier / Acero con flangia / with flanges mit Flanges / avec flasques con tapetas | 12 5M 09 | 05M0912 | 6F | FL014 | 12 | 19,10 | 17,96 | 23,0 | 12,0 | - | 14,5 | 20,0 | 4 | 0,028 |
| | 14 5M 09 | 05M0914 | 6F | FL002 | 14 | 22,28 | 21,14 | 25,0 | 13,0 | - | 14,5 | 20,0 | 6 | 0,034 |
| | 15 5M 09 | 05M0915 | 6F | FL004 | 15 | 23,87 | 22,73 | 28,0 | 16,0 | - | 14,5 | 20,0 | 6 | 0,042 |
| | 16 5M 09 | 05M0916 | 6F | FL004 | 16 | 25,46 | 24,32 | 28,0 | 16,5 | - | 14,5 | 20,0 | 6 | 0,050 |
| | 18 5M 09 | 05M0918 | 6F | FL006 | 18 | 28,65 | 27,51 | 32,0 | 20,0 | - | 14,5 | 20,0 | 6 | 0,070 |
| | 20 5M 09 | 05M0920 | 6F | FL008 | 20 | 31,83 | 30,69 | 36,0 | 23,0 | - | 14,5 | 22,5 | 6 | 0,094 |
| | 21 5M 09 | 05M0921 | 6F | FL009 | 21 | 33,42 | 32,28 | 38,0 | 24,0 | - | 14,5 | 22,5 | 6 | 0,110 |
| | 22 5M 09 | 05M0922 | 6F | FL015 | 22 | 35,01 | 33,87 | 39,0 | 25,5 | - | 14,5 | 22,5 | 6 | 0,118 |
| | 24 5M 09 | 05M0924 | 6F | FL013 | 24 | 38,20 | 37,06 | 42,0 | 27,0 | - | 14,5 | 22,5 | 6 | 0,145 |
| | 26 5M 09 | 05M0926 | 6F | FL012 | 26 | 41,38 | 40,24 | 44,0 | 30,0 | - | 14,5 | 22,5 | 6 | 0,170 |
| | 28 5M 09 | 05M0928 | 6F | FL011 | 28 | 44,56 | 43,42 | 48,0 | 30,5 | - | 14,5 | 22,5 | 6 | 0,200 |
| | 30 5M 09 | 05M0930 | 6F | FL016 | 30 | 47,75 | 46,60 | 51,0 | 35,0 | - | 14,5 | 22,5 | 6 | 0,236 |
| | 32 5M 09 | 05M0932 | 6F | FL018 | 32 | 50,93 | 49,79 | 54,0 | 38,0 | - | 14,5 | 22,5 | 8 | 0,210 |
| | 36 5M 09 | 05M0936 | 6F | FL021 | 36 | 57,30 | 56,16 | 60,0 | 38,0 | - | 14,5 | 22,5 | 8 | 0,324 |
| | 40 5M 09 | 05M0940 | 6F | FL025 | 40 | 63,66 | 62,52 | 71,0 | 38,0 | - | 14,5 | 22,5 | 8 | 0,400 |
| Alluminio / Aluminium Aluminium / Aluminium Aluminio senza flangia / without flanges / ohne Flanschen sans flasques / sin tapetas | 44 5M 09 | 05M0944 | 6W | - | 44 | 70,03 | 68,89 | - | 38,0 | 54 | 14,5 | 25,5 | 8 | 0,170 |
| | 48 5M 09 | 05M0948 | 6W | - | 48 | 76,39 | 75,25 | - | 45,0 | 61 | 14,5 | 25,5 | 8 | 0,182 |
| | 60 5M 09 | 05M0960 | 6W | - | 60 | 95,46 | 94,35 | - | 45,0 | 80 | 14,5 | 25,5 | 8 | 0,230 |
| | 72 5M 09 | 05M0972 | 6W | - | 72 | 114,59 | 113,45 | - | 45,0 | 100 | 14,5 | 25,5 | 8 | 0,270 |

Pulegge dentate per cinghie HTD® / Timing belt pulleys HTD®
HTD® Zahnriemenscheiben / Poulies dentées HTD®
Poleas para correas dentadas HTD®

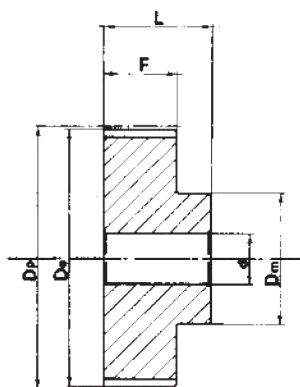


HTD® 5M-15

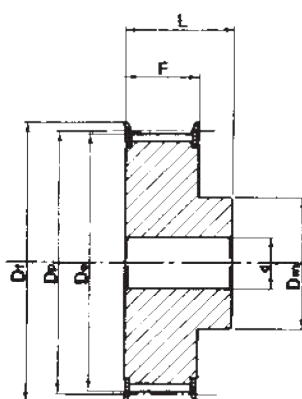
| Caratteristiche Features Merkmale Características | | Codice Code symbol Bezeichnung Code symbole Numero de fabrica | Nostro codice Our code Unser Code Notre code Nuestro codigo | Tipo Type Typ Type Tipo | Codice flangia Flange code Bordscheiben Typ Code flasque Código brida | N. denti N. of teeth Zähnezahl N. bre de dents Cantidad de dientes | Dp | De | Df | Dm | Di | F | L | Foro stock Stock bore Vor bohrung Alesage en stock Agujero de stock | Peso Weight / Gewicht Poids / Peso Kg |
|--|--|---|---|-------------------------------------|---|--|--------|--------|------|------|-----|------|------|---|--|
| Acciaio / Steel / Stahl Acier / Acero | con flangia / with flanges mit Flanges / avec flasques con tapetas | 12 5M 15 | 05M1512 | 6F | FL014 | 12 | 19,10 | 17,96 | 23,0 | 12,0 | - | 20,5 | 26,0 | 4 | 0,034 |
| | | 14 5M 15 | 05M1514 | 6F | FL002 | 14 | 22,28 | 21,14 | 25,0 | 13,0 | - | 20,5 | 26,0 | 6 | 0,046 |
| | | 15 5M 15 | 05M1515 | 6F | FL004 | 15 | 23,87 | 22,73 | 28,0 | 16,0 | - | 20,5 | 26,0 | 6 | 0,056 |
| | | 16 5M 15 | 05M1516 | 6F | FL004 | 16 | 25,46 | 24,32 | 28,0 | 16,5 | - | 20,5 | 26,0 | 6 | 0,064 |
| | | 18 5M 15 | 05M1518 | 6F | FL006 | 18 | 28,65 | 27,51 | 32,0 | 20,0 | - | 20,5 | 26,0 | 6 | 0,086 |
| | | 20 5M 15 | 05M1520 | 6F | FL008 | 20 | 31,83 | 30,69 | 36,0 | 23,0 | - | 20,5 | 26,0 | 6 | 0,112 |
| | | 21 5M 15 | 05M1521 | 6F | FL009 | 21 | 33,42 | 32,28 | 38,0 | 24,0 | - | 20,5 | 26,0 | 6 | 0,130 |
| | | 22 5M 15 | 05M1522 | 6F | FL015 | 22 | 35,01 | 33,87 | 39,0 | 25,5 | - | 20,5 | 26,0 | 6 | 0,140 |
| | | 24 5M 15 | 05M1524 | 6F | FL013 | 24 | 38,20 | 37,06 | 42,0 | 27,0 | - | 20,5 | 28,0 | 6 | 0,180 |
| | | 26 5M 15 | 05M1526 | 6F | FL012 | 26 | 41,38 | 40,24 | 44,0 | 30,0 | - | 20,5 | 28,0 | 6 | 0,220 |
| | | 28 5M 15 | 05M1528 | 6F | FL011 | 28 | 44,56 | 43,42 | 48,0 | 30,5 | - | 20,5 | 28,0 | 6 | 0,250 |
| | | 30 5M 15 | 05M1530 | 6F | FL016 | 30 | 47,75 | 46,60 | 51,0 | 35,0 | - | 20,5 | 28,0 | 6 | 0,300 |
| | | 32 5M 15 | 05M1532 | 6F | FL018 | 32 | 50,93 | 49,79 | 54,0 | 38,0 | - | 20,5 | 28,0 | 8 | 0,350 |
| | | 36 5M 15 | 05M1536 | 6F | FL021 | 36 | 57,30 | 56,16 | 60,0 | 38,0 | - | 20,5 | 28,0 | 8 | 0,426 |
| | | 40 5M 15 | 05M1540 | 6F | FL025 | 40 | 63,66 | 62,52 | 71,0 | 38,0 | - | 20,5 | 28,0 | 8 | 0,520 |
| Alluminio / Aluminium Aluminium / Aluminium Aluminio | senza flangia / without flanges / ohne Flanschen sans flasques / sin tapetas | 44 5M 15 | 05M1544 | 6W | - | 44 | 70,03 | 68,89 | - | 38,0 | 54 | 20,5 | 30,0 | 8 | 0,225 |
| | | 48 5M 15 | 05M1548 | 6W | - | 48 | 76,39 | 75,25 | - | 45,0 | 61 | 20,5 | 30,0 | 8 | 0,187 |
| | | 60 5M 15 | 05M1560 | 6W | - | 60 | 95,46 | 94,35 | - | 45,0 | 80 | 20,5 | 30,0 | 8 | 0,305 |
| | | 72 5M 15 | 05M1572 | 6W | - | 72 | 114,59 | 113,45 | - | 45,0 | 100 | 20,5 | 30,0 | 8 | 0,305 |

HTD® 5M-25

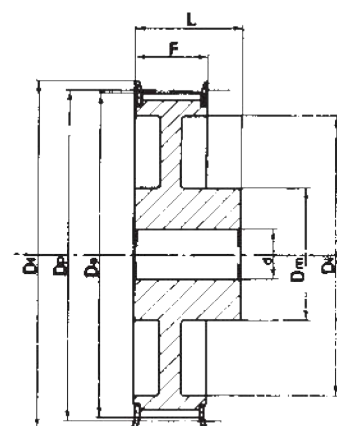
| Caratteristiche Features Merkmale Características | | Codice Code symbol Bezeichnung Code symbole Numero de fabrica | Nostro codice Our code Unser Code Notre code Nuestro codigo | Tipo Type Typ Type Tipo | Codice flangia Flange code Bordscheiben Typ Code flasque Código brida | N. denti N. of teeth Zähnezahl N. bre de dents Cantidad de dientes | Dp | De | Df | Dm | Di | F | L | Foro stock Stock bore Vor bohrung Alesage en stock Agujero de stock | Peso Weight / Gewicht Poids / Peso Kg |
|--|--|---|---|-------------------------------------|---|--|--------|--------|------|------|-----|------|------|---|--|
| Acciaio / Steel / Stahl Acier / Acero | con flangia / with flanges mit Flanges / avec flasques con tapetas | 12 5M 25 | 05M2512 | 6F | FL014 | 12 | 19,10 | 17,96 | 23,0 | 12,0 | - | 30,5 | 36,0 | 4 | 0,050 |
| | | 14 5M 25 | 05M2514 | 6F | FL002 | 14 | 22,28 | 21,14 | 25,0 | 13,0 | - | 30,5 | 36,0 | 6 | 0,070 |
| | | 15 5M 25 | 05M2515 | 6F | FL004 | 15 | 23,87 | 22,73 | 28,0 | 16,0 | - | 30,5 | 36,0 | 6 | 0,080 |
| | | 16 5M 25 | 05M2516 | 6F | FL004 | 16 | 25,46 | 24,32 | 28,0 | 16,5 | - | 30,5 | 36,0 | 6 | 0,100 |
| | | 18 5M 25 | 05M2518 | 6F | FL006 | 18 | 28,65 | 27,51 | 32,0 | 20,0 | - | 30,5 | 36,0 | 6 | 0,120 |
| | | 20 5M 25 | 05M2520 | 6F | FL008 | 20 | 31,83 | 30,69 | 36,0 | 23,0 | - | 30,5 | 36,0 | 6 | 0,160 |
| | | 21 5M 25 | 05M2521 | 6F | FL009 | 21 | 33,42 | 32,28 | 38,0 | 24,0 | - | 30,5 | 38,5 | 6 | 0,190 |
| | | 22 5M 25 | 05M2522 | 6F | FL015 | 22 | 35,01 | 33,87 | 39,0 | 25,5 | - | 30,5 | 38,5 | 6 | 0,210 |
| | | 24 5M 25 | 05M2524 | 6F | FL013 | 24 | 38,20 | 37,06 | 42,0 | 27,0 | - | 30,5 | 38,5 | 6 | 0,250 |
| | | 26 5M 25 | 05M2526 | 6F | FL012 | 26 | 41,38 | 40,24 | 44,0 | 30,0 | - | 30,5 | 38,5 | 6 | 0,300 |
| | | 28 5M 25 | 05M2528 | 6F | FL011 | 28 | 44,56 | 43,42 | 48,0 | 30,5 | - | 30,5 | 38,5 | 6 | 0,350 |
| | | 30 5M 25 | 05M2530 | 6F | FL016 | 30 | 47,75 | 46,60 | 51,0 | 35,0 | - | 30,5 | 38,5 | 6 | 0,420 |
| | | 32 5M 25 | 05M2532 | 6F | FL018 | 32 | 50,93 | 49,79 | 54,0 | 38,0 | - | 30,5 | 38,5 | 8 | 0,480 |
| | | 36 5M 25 | 05M2536 | 6F | FL021 | 36 | 57,30 | 56,16 | 60,0 | 38,0 | - | 30,5 | 38,5 | 8 | 0,590 |
| | | 40 5M 25 | 05M2540 | 6F | FL025 | 40 | 63,66 | 62,52 | 71,0 | 38,0 | - | 30,5 | 38,5 | 8 | 0,740 |
| Alluminio / Aluminium Aluminium / Aluminium Aluminio | senza flangia / without flanges / ohne Flanschen sans flasques / sin tapetas | 44 5M 25 | 05M2544 | 6W | - | 44 | 70,03 | 68,89 | - | 38,0 | 54 | 30,5 | 40,5 | 8 | 0,320 |
| | | 48 5M 25 | 05M2548 | 6W | - | 48 | 76,39 | 75,25 | - | 45,0 | 61 | 30,5 | 40,5 | 8 | 0,275 |
| | | 60 5M 25 | 05M2560 | 6W | - | 60 | 95,46 | 94,35 | - | 45,0 | 80 | 30,5 | 40,5 | 8 | 0,435 |
| | | 72 5M 25 | 05M2572 | 6W | - | 72 | 114,59 | 113,45 | - | 45,0 | 100 | 30,5 | 40,5 | 8 | 0,525 |



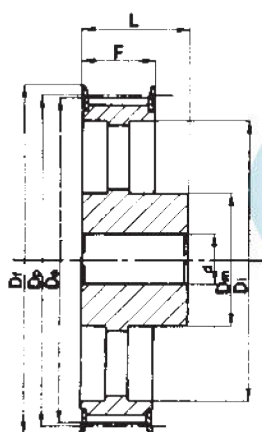
Tipo / Type
6



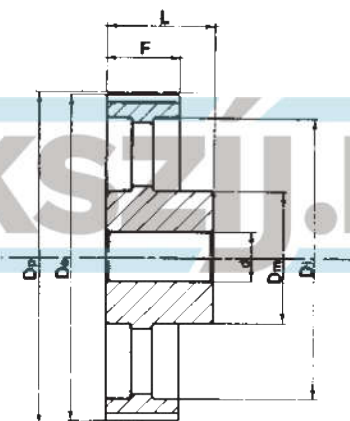
Tipo / Type
6F



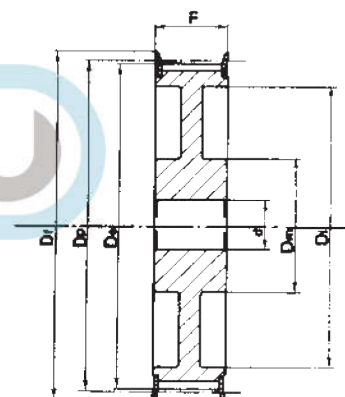
Tipo / Type
6WF



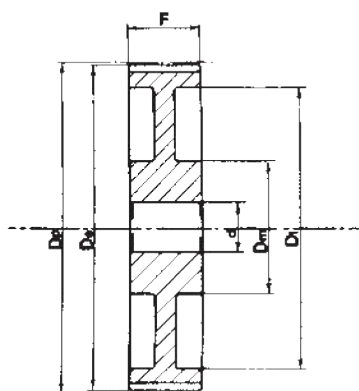
Tipo / Type
6AF



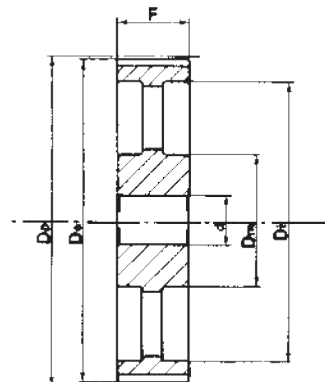
Tipo / Type
6A



Tipo / Type
10WF



Tipo / Type
10W



Tipo / Type
10A

Pulegge dentate per cinghie HTD® / Timing belt pulleys HTD®
HTD® Zahnriemenscheiben / Poulies dentées HTD®
Poleas para correas dentadas HTD®



HTD® 8M-20

| Caratteristiche Features Merkmale Características | | Codice Code symbol Bezeichnung Code symbole Numero de fabrica | Nostro codice Our code Unser Code Notre code Nuestro código | Tipo Type Typ Type Tipo | Codice flangia Flange code Bordscheiben Typ Code flasque Código brida | N. denti N. of teeth Zähnezahl N. bre de dents Cantidad de dientes | Dp | De | Df | Dm | Di | F | L | d | Peso Weight / Gewicht Poids / Peso Kg |
|--|--|---|---|-------------------------------------|---|--|--------|--------|-------|-------|-----|----|----|----|--|
| Acciaio / Steel / Stahl Acier / Acero | con flangia / with flanges mit Flanges / avec flasques con tapetas | 22 8M 20 | 08M2022 | 6F | FL053 | 22 | 56,02 | 54,65 | 60,0 | 43,0 | - | 28 | 38 | 12 | 0,54 |
| | | 24 8M 20 | 08M2024 | 6F | FL069 | 24 | 61,12 | 59,75 | 66,0 | 45,0 | - | 28 | 38 | 12 | 0,65 |
| | | 26 8M 20 | 08M2026 | 6F | FL061 | 26 | 66,21 | 64,84 | 70,0 | 48,0 | - | 28 | 38 | 12 | 0,80 |
| | | 28 8M 20 | 08M2028 | 6F | FL079 | 28 | 71,30 | 69,93 | 75,0 | 50,0 | - | 28 | 38 | 15 | 0,87 |
| | | 30 8M 20 | 08M2030 | 6F | FL073 | 30 | 76,39 | 75,02 | 83,0 | 55,0 | - | 28 | 38 | 15 | 1,02 |
| | | 32 8M 20 | 08M2032 | 6F | FL076 | 32 | 81,49 | 80,16 | 87,0 | 60,0 | - | 28 | 38 | 15 | 1,20 |
| | | 34 8M 20 | 08M2034 | 6F | FL066 | 34 | 86,58 | 85,22 | 91,0 | 70,0 | - | 28 | 38 | 15 | 1,40 |
| | | 36 8M 20 | 08M2036 | 6F | FL068 | 36 | 91,67 | 90,30 | 97,0 | 75,0 | - | 28 | 38 | 15 | 1,55 |
| | | 38 8M 20 | 08M2038 | 6F | FL070 | 38 | 96,77 | 95,39 | 102,0 | 75,0 | - | 28 | 38 | 15 | 1,65 |
| | | 40 8M 20 | 08M2040 | 6F | FL077 | 40 | 101,86 | 100,49 | 106,0 | 75,0 | - | 28 | 38 | 15 | 1,74 |
| | | 44 8M 20 | 08M2044 | 6F | FL075 | 44 | 112,05 | 110,67 | 120,0 | 75,0 | - | 28 | 38 | 15 | 2,10 |
| | | 48 8M 20 | 08M2048 | 6F | FL078 | 48 | 122,23 | 120,86 | 128,0 | 75,0 | - | 28 | 38 | 15 | 2,44 |
| | | 56 8M 20 | 08M2056 | 6WF | FL085 | 56 | 142,60 | 141,23 | 150,0 | 80,0 | 116 | 28 | 38 | 15 | 2,60 |
| | | 64 8M 20 | 08M2064 | 6WF | FL090 | 64 | 162,97 | 161,60 | 168,0 | 80,0 | 137 | 28 | 38 | 15 | 2,90 |
| | | 72 8M 20 | 08M2072 | 6WF | FL097 | 72 | 183,35 | 181,97 | 192,0 | 80,0 | 158 | 28 | 38 | 15 | 3,10 |
| Ghisa / Cast iron Grauguss / Fonte Hierro fundido | senza flangia / without flanges / ohne Flanschen sans flasques / sin tapetas | 80 8M 20 | 08M2080 | 6W | - | 80 | 203,72 | 202,35 | - | 90,0 | 180 | 28 | 38 | 15 | 3,80 |
| | | 90 8M 20 | 08M2090 | 6A | - | 90 | 229,18 | 227,81 | - | 90,0 | 204 | 28 | 38 | 15 | 4,20 |
| | | 112 8M 20 | 08M2011 | 6A | - | 112 | 285,21 | 283,83 | - | 90,0 | 254 | 28 | 38 | 18 | 5,20 |
| | | 144 8M 20 | 08M2014 | 6A | - | 144 | 366,69 | 365,32 | - | 90,0 | 336 | 28 | 38 | 20 | 7,50 |
| | | 168 8M 20 | 08M2016 | 6A | - | 168 | 427,81 | 426,44 | - | 100,0 | 400 | 28 | 38 | 20 | 10,00 |
| | | 192 8M 20 | 08M2019 | 6A | - | 192 | 488,92 | 487,55 | - | 100,0 | 460 | 28 | 38 | 20 | 14,40 |

HTD® 8M 30

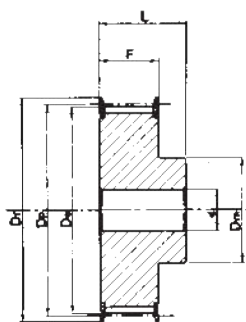
| Caratteristiche Features Merkmale Características | | Codice Code symbol Bezeichnung Code symbole Numero de fabrica | Nostro codice Our code Unser Code Notre code Nuestro código | Tipo Type Typ Type Tipo | Codice flangia Flange code Bordscheiben Typ Code flasque Código brida | N. denti N. of teeth Zähnezahl N. bre de dents Cantidad de dientes | Dp | De | Df | Dm | Di | F | L | d | Peso Weight / Gewicht Poids / Peso Kg |
|--|--|---|---|-------------------------------------|---|--|--------|--------|-------|-------|-----|----|----|----|--|
| Acciaio / Steel / Stahl Acier / Acero | con flangia / with flanges mit Flanges / avec flasques con tapetas | 22 8M 30 | 08M3022 | 6F | FL053 | 22 | 56,02 | 54,65 | 60,0 | 43,0 | - | 38 | 48 | 12 | 0,69 |
| | | 24 8M 30 | 08M3024 | 6F | FL069 | 24 | 61,12 | 59,75 | 66,0 | 45,0 | - | 38 | 48 | 12 | 0,84 |
| | | 26 8M 30 | 08M3026 | 6F | FL061 | 26 | 66,21 | 64,84 | 70,0 | 48,0 | - | 38 | 48 | 12 | 1,00 |
| | | 28 8M 30 | 08M3028 | 6F | FL079 | 28 | 71,30 | 69,93 | 75,0 | 50,0 | - | 38 | 48 | 15 | 1,12 |
| | | 30 8M 30 | 08M3030 | 6F | FL073 | 30 | 76,39 | 75,02 | 83,0 | 55,0 | - | 38 | 48 | 15 | 1,32 |
| | | 32 8M 30 | 08M3032 | 6F | FL076 | 32 | 81,49 | 80,16 | 87,0 | 60,0 | - | 38 | 48 | 15 | 1,53 |
| | | 34 8M 30 | 08M3034 | 6F | FL066 | 34 | 86,58 | 85,22 | 91,0 | 70,0 | - | 38 | 48 | 15 | 1,80 |
| | | 36 8M 30 | 08M3036 | 6F | FL068 | 36 | 91,67 | 90,30 | 97,0 | 75,0 | - | 38 | 48 | 15 | 1,99 |
| | | 38 8M 30 | 08M3038 | 6F | FL070 | 38 | 96,77 | 95,39 | 102,0 | 75,0 | - | 38 | 48 | 15 | 2,27 |
| | | 40 8M 30 | 08M3040 | 6F | FL077 | 40 | 101,86 | 100,49 | 106,0 | 75,0 | - | 38 | 48 | 15 | 2,40 |
| | | 44 8M 30 | 08M3044 | 6F | FL075 | 44 | 112,05 | 110,67 | 120,0 | 75,0 | - | 38 | 48 | 15 | 2,80 |
| | | 48 8M 30 | 08M3048 | 6F | FL078 | 48 | 122,23 | 120,86 | 128,0 | 75,0 | - | 38 | 48 | 15 | 3,20 |
| | | 56 8M 30 | 08M3056 | 6WF | FL085 | 56 | 142,60 | 141,23 | 150,0 | 90,0 | 116 | 38 | 48 | 15 | 3,60 |
| | | 64 8M 30 | 08M3064 | 6WF | FL090 | 64 | 162,97 | 161,60 | 168,0 | 90,0 | 137 | 38 | 48 | 15 | 4,30 |
| | | 72 8M 30 | 08M3072 | 6WF | FL097 | 72 | 183,35 | 181,97 | 192,0 | 95,0 | 158 | 38 | 48 | 15 | 4,80 |
| Ghisa / Cast iron Grauguss / Fonte Hierro fundido | senza flangia / without flanges / ohne Flanschen sans flasques / sin tapetas | 80 8M 30 | 08M3080 | 6W | - | 80 | 203,72 | 202,35 | - | 100,0 | 180 | 38 | 48 | 15 | 5,10 |
| | | 90 8M 30 | 08M3090 | 6A | - | 90 | 229,18 | 227,81 | - | 100,0 | 204 | 38 | 48 | 15 | 5,70 |
| | | 112 8M 30 | 08M3011 | 6A | - | 112 | 285,21 | 283,83 | - | 100,0 | 254 | 38 | 48 | 18 | 6,80 |
| | | 144 8M 30 | 08M3014 | 6A | - | 144 | 366,69 | 365,32 | - | 100,0 | 336 | 38 | 48 | 20 | 9,30 |
| | | 168 8M 30 | 08M3016 | 6A | - | 168 | 427,81 | 426,44 | - | 100,0 | 400 | 38 | 48 | 20 | 11,40 |
| | | 192 8M 30 | 08M3019 | 6A | - | 192 | 488,92 | 487,55 | - | 100,0 | 460 | 38 | 48 | 20 | 16,00 |

HTD® 8M-50

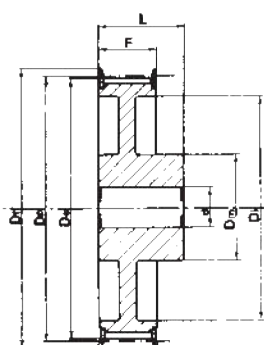
| Caratteristiche Features Merkmale Características | | Codice Code symbol Bezeichnung Code symbole Numero de fabrica | Nostro codice Our code Unser Code Notre code Nuestro codigo | Tipo Type Typ Type Tipo | Codice flangia Flange code Bordscheiben Typ Code flasque Código brida | N. denti N. of teeth Zähnezahl N. bre de dents Cantidad de dientes | Dp | De | Df | Dm | Di | F | L | d | Peso Weight / Gewicht Poids / Peso Kg |
|--|--|---|---|-------------------------------------|---|--|--------|--------|-------|-------|-----|----|----|----|--|
| Acciaio / Steel / Stahl Acier / Acero | con flangia / with flanges mit Flanges / avec flasques con tapetas | 22 8M 50 | 08M5022 | 6F | FL053 | 22 | 56,02 | 54,65 | 60,0 | 43,0 | - | 60 | 70 | 12 | 1,00 |
| | | 24 8M 50 | 08M5024 | 6F | FL069 | 24 | 61,12 | 59,75 | 66,0 | 45,0 | - | 60 | 70 | 12 | 1,23 |
| | | 26 8M 50 | 08M5026 | 6F | FL061 | 26 | 66,21 | 64,84 | 70,0 | 48,0 | - | 60 | 70 | 15 | 1,50 |
| | | 28 8M 50 | 08M5028 | 6F | FL079 | 28 | 71,30 | 69,93 | 75,0 | 50,0 | - | 60 | 70 | 15 | 1,67 |
| | | 30 8M 50 | 08M5030 | 6F | FL073 | 30 | 76,39 | 75,02 | 83,0 | 55,0 | - | 60 | 70 | 15 | 1,97 |
| | | 32 8M 50 | 08M5032 | 6F | FL076 | 32 | 81,49 | 80,16 | 87,0 | 60,0 | - | 60 | 70 | 15 | 2,27 |
| | | 34 8M 50 | 08M5034 | 6F | FL066 | 34 | 86,58 | 85,22 | 91,0 | 70,0 | - | 60 | 70 | 15 | 2,69 |
| | | 36 8M 50 | 08M5036 | 6F | FL068 | 36 | 91,67 | 90,30 | 97,0 | 75,0 | - | 60 | 70 | 15 | 2,97 |
| | | 38 8M 50 | 08M5038 | 6F | FL070 | 38 | 96,77 | 95,39 | 102,0 | 75,0 | - | 60 | 70 | 15 | 3,23 |
| | | 40 8M 50 | 08M5040 | 6F | FL077 | 40 | 101,86 | 100,49 | 106,0 | 75,0 | - | 60 | 70 | 18 | 3,50 |
| | | 44 8M 50 | 08M5044 | 6F | FL075 | 44 | 112,05 | 110,67 | 120,0 | 75,0 | - | 60 | 70 | 18 | 3,90 |
| | | 48 8M 50 | 08M5048 | 6F | FL078 | 48 | 122,23 | 120,86 | 128,0 | 75,0 | - | 60 | 70 | 18 | 4,30 |
| | | 56 8M 50 | 08M5056 | 10WF | FL085 | 56 | 142,60 | 141,23 | 150,0 | 80,0 | 116 | 60 | 60 | 18 | 5,00 |
| | | 64 8M 50 | 08M5064 | 10WF | FL090 | 64 | 162,97 | 161,60 | 168,0 | 80,0 | 137 | 60 | 60 | 18 | 5,60 |
| | | 72 8M 50 | 08M5072 | 10WF | FL097 | 72 | 183,35 | 181,97 | 192,0 | 80,0 | 158 | 60 | 60 | 18 | 6,80 |
| Ghisa / Cast Iron Grauguss / Fonte Hierro fundido | senza flangia / without flanges / ohne Flanschen sans flasques / sin tapetas | 80 8M 50 | 08M5080 | 10W | | 80 | 203,72 | 202,35 | - | 110,0 | 180 | 60 | 60 | 18 | 6,90 |
| | | 90 8M 50 | 08M5090 | 10A | | 90 | 229,18 | 227,81 | - | 110,0 | 204 | 60 | 60 | 18 | 8,60 |
| | | 112 8M 50 | 08M5011 | 10A | | 112 | 285,21 | 283,83 | - | 110,0 | 254 | 60 | 60 | 18 | 9,60 |
| | | 144 8M 50 | 08M5014 | 10A | | 144 | 366,69 | 365,32 | - | 110,0 | 336 | 60 | 60 | 20 | 13,80 |
| | | 168 8M 50 | 08M5016 | 10A | | 168 | 427,81 | 426,44 | - | 120,0 | 400 | 60 | 60 | 20 | 16,00 |
| | | 192 8M 50 | 08M5019 | 10A | | 192 | 488,92 | 487,55 | - | 130,0 | 460 | 60 | 60 | 20 | 22,40 |

HTD® 8M-85

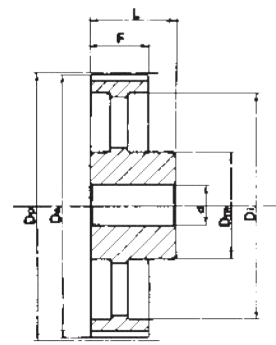
| Caratteristiche Features Merkmale Características | | Codice Code symbol Bezeichnung Code symbole Numero de fabrica | Nostro codice Our code Unser Code Notre code Nuestro código | Tipo Type Typ Type Tipo | Codice flangia Flange code Bordscheiben Typ Code flasque Código brida | N. denti N. of teeth Zähnezahl N. bre de dents Cantidad de dientes | Dp | De | Df | Dm | Di | F | L | d | Peso Weight / Gewicht Poids / Peso Kg |
|--|--|---|---|-------------------------------------|---|--|--------|--------|-------|-------|-----|----|-----|----|--|
| Acciaio / Steel / Stahl Acier / Acero | con flangia / with flanges mit Flanges / avec flasques con tapetas | 22 8M 85 | 08M8522 | 6F | FL053 | 22 | 56,02 | 54,65 | 60,0 | 43,0 | - | 95 | 105 | 12 | 1,55 |
| | | 24 8M 85 | 08M8524 | 6F | FL069 | 24 | 61,12 | 59,75 | 66,0 | 45,0 | - | 95 | 105 | 12 | 1,90 |
| | | 26 8M 85 | 08M8526 | 6F | FL061 | 26 | 66,21 | 64,84 | 70,0 | 48,0 | - | 95 | 105 | 12 | 2,25 |
| | | 28 8M 85 | 08M8528 | 6F | FL079 | 28 | 71,30 | 69,93 | 75,0 | 50,0 | - | 95 | 105 | 15 | 2,55 |
| | | 30 8M 85 | 08M8530 | 6F | FL073 | 30 | 76,39 | 75,02 | 83,0 | 55,0 | - | 95 | 105 | 15 | 3,00 |
| | | 32 8M 85 | 08M8532 | 6F | FL076 | 32 | 81,49 | 80,16 | 87,0 | 60,0 | - | 95 | 105 | 15 | 3,57 |
| | | 34 8M 85 | 08M8534 | 6F | FL066 | 34 | 86,58 | 85,22 | 91,0 | 66,0 | - | 95 | 105 | 15 | 4,00 |
| | | 36 8M 85 | 08M8536 | 6F | FL068 | 36 | 91,67 | 90,30 | 97,0 | 70,0 | - | 95 | 105 | 15 | 4,50 |
| | | 38 8M 85 | 08M8538 | 6F | FL070 | 38 | 96,77 | 95,39 | 102,0 | 75,0 | - | 95 | 105 | 15 | 5,00 |
| | | 40 8M 85 | 08M8540 | 6F | FL077 | 40 | 101,86 | 100,49 | 106,0 | 75,0 | - | 95 | 105 | 18 | 5,20 |
| | | 44 8M 85 | 08M8544 | 6F | FL075 | 44 | 112,05 | 110,67 | 120,0 | 75,0 | - | 95 | 105 | 18 | 6,60 |
| | | 48 8M 85 | 08M8548 | 6F | FL078 | 48 | 122,23 | 120,86 | 128,0 | 80,0 | - | 95 | 105 | 18 | 7,00 |
| | | 56 8M 85 | 08M8556 | 6F | FL085 | 56 | 142,60 | 141,23 | 150,0 | 90,0 | - | 95 | 105 | 18 | 10,00 |
| | | 64 8M 85 | 08M8564 | 10WF | FL090 | 64 | 162,97 | 161,60 | 168,0 | 100,0 | 137 | 95 | 95 | 20 | 10,40 |
| | | 72 8M 85 | 08M8572 | 10WF | FL097 | 72 | 183,35 | 181,97 | 192,0 | 100,0 | 158 | 95 | 95 | 20 | 11,40 |
| Ghisa / Cast iron Grauguss / Fonte Hierro fundido | senza flangia / without flanges / ohne Flanschen sans flasques / sin tapetas | 80 8M 85 | 08M8580 | 10W | - | 80 | 203,72 | 202,35 | - | 110,0 | 180 | 95 | 95 | 20 | 11,10 |
| | | 90 8M 85 | 08M8590 | 10A | - | 90 | 229,18 | 227,81 | - | 110,0 | 204 | 95 | 95 | 20 | 12,20 |
| | | 112 8M 85 | 08M8511 | 10A | - | 112 | 285,21 | 283,83 | - | 110,0 | 254 | 95 | 95 | 24 | 15,00 |
| | | 144 8M 85 | 08M8514 | 10A | - | 144 | 366,69 | 365,32 | - | 110,0 | 336 | 95 | 95 | 24 | 21,50 |
| | | 168 8M 85 | 08M8516 | 10A | - | 168 | 427,81 | 426,44 | - | 120,0 | 400 | 95 | 95 | 24 | 24,10 |
| | | 192 8M 85 | 08M8519 | 10A | - | 192 | 488,92 | 487,55 | - | 130,0 | 460 | 95 | 95 | 24 | 30,60 |



Tipo / Type
6F



Tipo / Type
6WF



Tipo / Type
6A



HTD® 14M-40

| Caratteristiche Features Merkmale Características | | Codice Code symbol Bezeichnung Code symbole Numero de fabrica | Nostro codice Our code Unser Code Notre code Nuestro código | Tipo Type Typ Type Tipo | Codice flangia Flange code Bordscheiben Typ Code flasque Código brida | N. denti N. of teeth Zähnezahl N. bre de dents Cantidad de dientes | Dp | De | Df | Dm | Di | F | L | d | Peso Weight / Gewicht Poids / Peso Kg |
|--|--|---|--|-------------------------------------|---|--|--------|--------|--------|--------|-------|-------|-------|----|--|
| Acciaio / Steel / Stahl Acier / Acero | con flangia / with flanges mit Flanges / avec flasques con tapetas | 28 14M 40 | 14M4028 | 6F | FL153 | 28 | 124,78 | 122,12 | 128,0 | 100,0 | - | 54 | 69 | 24 | 4,73 |
| | | 29 14M 40 | 14M4029 | 6F | FL154 | 29 | 129,23 | 126,57 | 138,0 | 100,0 | - | 54 | 69 | 24 | 5,09 |
| | | 30 14M 40 | 14M4030 | 6F | FL154 | 30 | 133,69 | 130,99 | 138,0 | 100,0 | - | 54 | 69 | 24 | 5,45 |
| | | 32 14M 40 | 14M4032 | 6F | FL160 | 32 | 142,60 | 139,88 | 154,0 | 100,0 | - | 54 | 69 | 24 | 6,17 |
| | | 34 14M 40 | 14M4034 | 6F | FL166 | 34 | 151,52 | 148,79 | 160,0 | 100,0 | - | 54 | 69 | 24 | 6,88 |
| | | 36 14M 40 | 14M4036 | 6F | FL168 | 36 | 160,43 | 157,68 | 168,0 | 100,0 | - | 54 | 69 | 24 | 7,60 |
| | | 38 14M 40 | 14M4038 | 6F | FL172 | 38 | 169,34 | 166,60 | 183,0 | 120,0 | - | 54 | 69 | 24 | 8,28 |
| | | 40 14M 40 | 14M4040 | 6F | FL162 | 40 | 178,25 | 175,49 | 188,0 | 120,0 | - | 54 | 69 | 24 | 9,26 |
| | | 44 14M 40 | 14M4044 | 6F | FL175 | 44 | 196,08 | 193,28 | 211,0 | 120,0 | - | 54 | 69 | 24 | 10,32 |
| | | Ghisa / Cast iron Grauguss / Fonte Hierro fundido | con flangia / with flanges mit Flanges / avec flasques con tapetas | 48 14M 40 | 14M4048 | 6WF | FL180 | 48 | 213,90 | 211,11 | 226,0 | 135,0 | 170 | 54 | 69 |
| 56 14M 40 | 14M4056 | | | 6WF | FL182 | 56 | 249,55 | 246,76 | 256,0 | 135,0 | 207 | 54 | 69 | 28 | 13,05 |
| 64 14M 40 | 14M4064 | | | 6WF | FL184 | 64 | 285,21 | 282,41 | 296,0 | 135,0 | 240 | 54 | 69 | 28 | 14,40 |
| senza flangia / without flanges / ohne Flanschen sans flasques / sin tapetas | 72 14M 40 | | 14M4072 | 6A | - | 72 | 320,86 | 318,06 | - | 135,0 | 280 | 54 | 69 | 28 | 16,90 |
| | 80 14M 40 | | 14M4080 | 6A | - | 80 | 356,51 | 353,71 | - | 135,0 | 314 | 54 | 69 | 28 | 18,50 |
| | 90 14M 40 | | 14M4090 | 6A | - | 90 | 401,07 | 398,28 | - | 135,0 | 358 | 54 | 69 | 28 | 20,00 |
| | 112 14M 40 | | 14M4011 | 6A | - | 112 | 499,11 | 496,32 | - | 135,0 | 456 | 54 | 69 | 28 | 26,70 |
| | 144 14M 40 | | 14M4014 | 6A | - | 144 | 641,71 | 638,92 | - | 135,0 | 600 | 54 | 69 | 28 | 35,00 |
| | 168 14M 40 | | 14M4016 | 6A | - | 168 | 748,66 | 745,87 | - | 135,0 | 706 | 54 | 69 | 28 | 44,20 |
| | 192 14M 40 | | 14M4019 | 6A | - | 192 | 855,62 | 852,82 | - | 135,0 | 813 | 54 | 69 | 28 | 52,20 |
| 216 14M 40 | 14M4021 | 6A | - | 216 | 962,57 | 959,76 | - | 150,0 | 920 | 54 | 69 | 28 | 62,50 | | |

HTD® 14M-55

| Caratteristiche Features Merkmale Características | | Codice Code symbol Bezeichnung Code symbole Numero de fabrica | Nostro codice Our code Unser Code Notre code Nuestro código | Tipo Type Typ Type Tipo | Codice flangia Flange code Bordscheiben Typ Code flasque Código brida | N. denti N. of teeth Zähnezahl N. bre de dents Cantidad de dientes | Dp | De | Df | Dm | Di | F | L | d | Peso Weight / Gewicht Poids / Peso Kg |
|--|--|---|---|-------------------------------------|---|--|--------|--------|-------|-------|-----|----|----|----|--|
| Acciaio / Steel / Stahl Acier / Acero | con flangia / with flanges mit Flanges / avec flasques con tapetas | 28 14M 55 | 14M5528 | 6F | FL153 | 28 | 124,78 | 122,12 | 128,0 | 100,0 | - | 70 | 85 | 24 | 5,60 |
| | | 29 14M 55 | 14M5529 | 6F | FL154 | 29 | 129,23 | 126,57 | 138,0 | 100,0 | - | 70 | 85 | 24 | 6,10 |
| | | 30 14M 55 | 14M5530 | 6F | FL154 | 30 | 133,69 | 130,99 | 138,0 | 100,0 | - | 70 | 85 | 24 | 6,60 |
| | | 32 14M 55 | 14M5532 | 6F | FL160 | 32 | 142,60 | 139,88 | 154,0 | 100,0 | - | 70 | 85 | 24 | 7,60 |
| | | 34 14M 55 | 14M5534 | 6F | FL166 | 34 | 151,52 | 148,79 | 160,0 | 100,0 | - | 70 | 85 | 24 | 8,60 |
| | | 36 14M 55 | 14M5536 | 6F | FL168 | 36 | 160,43 | 157,68 | 168,0 | 100,0 | - | 70 | 85 | 24 | 9,60 |
| | | 38 14M 55 | 14M5538 | 6F | FL172 | 38 | 169,34 | 166,60 | 183,0 | 120,0 | - | 70 | 85 | 24 | 10,80 |
| | | 40 14M 55 | 14M5540 | 6F | FL162 | 40 | 178,25 | 175,49 | 188,0 | 120,0 | - | 70 | 85 | 24 | 11,20 |
| | | 44 14M 55 | 14M5544 | 6F | FL175 | 44 | 196,08 | 193,28 | 211,0 | 120,0 | - | 70 | 85 | 24 | 12,50 |
| Ghisa / Cast iron Grauguss / Fonte Hierro fundido | con flangia / with flanges mit Flanges / avec flasques con tapetas | 48 14M 55 | 14M5548 | 10WF | FL180 | 48 | 213,90 | 211,11 | 226,0 | 135,0 | 170 | 70 | 70 | 24 | 13,70 |
| | | 56 14M 55 | 14M5556 | 10WF | FL182 | 56 | 249,55 | 246,76 | 256,0 | 135,0 | 207 | 70 | 70 | 28 | 14,50 |
| | | 64 14M 55 | 14M5564 | 10WF | FL184 | 64 | 285,21 | 282,41 | 296,0 | 135,0 | 240 | 70 | 70 | 28 | 15,60 |
| | senza flangia / without flanges / ohne Flanschen sans flasques / sin tapetas | 72 14M 55 | 14M5572 | 10A | - | 72 | 320,86 | 318,06 | - | 135,0 | 280 | 70 | 70 | 28 | 16,90 |
| | | 80 14M 55 | 14M5580 | 10A | - | 80 | 356,51 | 353,71 | - | 135,0 | 314 | 70 | 70 | 28 | 20,00 |
| | | 90 14M 55 | 14M5590 | 10A | - | 90 | 401,07 | 398,28 | - | 135,0 | 358 | 70 | 70 | 28 | 22,60 |
| | | 112 14M 55 | 14M5511 | 10A | - | 112 | 499,11 | 496,32 | - | 135,0 | 456 | 70 | 70 | 28 | 29,50 |
| | | 144 14M 55 | 14M5514 | 10A | - | 144 | 641,71 | 638,92 | - | 135,0 | 600 | 70 | 70 | 28 | 39,00 |
| | | 168 14M 55 | 14M5516 | 10A | - | 168 | 748,66 | 745,87 | - | 135,0 | 706 | 70 | 70 | 28 | 48,50 |
| | | 192 14M 55 | 14M5519 | 10A | - | 192 | 855,62 | 852,82 | - | 135,0 | 813 | 70 | 70 | 28 | 57,80 |
| | | 216 14M 55 | 14M5521 | 10A | - | 216 | 962,57 | 959,76 | - | 150,0 | 920 | 70 | 70 | 28 | 67,00 |

HTD® 14M-85

| Caratteristiche Features Merkmale Características | | Codice Code symbol Bezeichnung Code symbole Numero de fabrica | Nostro codice Our code Unser Code Notre code Nuestro código | Tipo Type Typ Type Tipo | Codice flangia Flange code Bordscheiben Typ Code flasque Código brida | N. denti N. of teeth Zähnezahl N. bre de dents Cantidad de dientes | Dp | De | Df | Dm | Di | F | L | d | Peso Weight / Gewicht Poids / Peso Kg |
|--|--|---|---|-------------------------------------|---|--|--------|--------|-------|-------|-----|-----|-------|----|--|
| Acciaio / Steel / Stahl Acier / Acero | con flangia / with flanges mit Flanges / avec flasques con tapetas | 28 14M 85 | 14M8528 | 6F | FL153 | 28 | 124,78 | 122,12 | 128,0 | 100,0 | - | 102 | 117 | 24 | 7,70 |
| | | 29 14M 85 | 14M8529 | 6F | FL154 | 29 | 129,23 | 126,57 | 138,0 | 100,0 | - | 102 | 117 | 24 | 8,40 |
| | | 30 14M 85 | 14M8530 | 6F | FL154 | 30 | 133,69 | 130,99 | 138,0 | 100,0 | - | 102 | 117 | 24 | 9,10 |
| | | 32 14M 85 | 14M8532 | 6F | FL160 | 32 | 142,60 | 139,88 | 154,0 | 100,0 | - | 102 | 117 | 24 | 10,50 |
| | | 34 14M 85 | 14M8534 | 6F | FL166 | 34 | 151,52 | 148,79 | 160,0 | 100,0 | - | 102 | 117 | 24 | 11,90 |
| | | 36 14M 85 | 14M8536 | 6F | FL168 | 36 | 160,43 | 157,68 | 168,0 | 100,0 | - | 102 | 117 | 32 | 13,20 |
| | | 38 14M 85 | 14M8538 | 6F | FL172 | 38 | 169,34 | 166,60 | 183,0 | 120,0 | - | 102 | 117 | 32 | 15,15 |
| | | 40 14M 85 | 14M8540 | 6F | FL162 | 40 | 178,25 | 175,49 | 188,0 | 135,0 | - | 102 | 117 | 32 | 17,10 |
| | | 44 14M 85 | 14M8544 | 6F | FL175 | 44 | 196,08 | 193,28 | 211,0 | 135,0 | - | 102 | 117 | 32 | 23,30 |
| 48 14M 85 | 14M8548 | 6F | FL180 | 48 | 213,90 | 211,11 | 226,0 | 150,0 | - | 102 | 117 | 32 | 25,00 | | |
| Ghisa / Cast iron Grauguss / Fonte Hierro fundido | con flangia / with flanges mit Flanges / avec flasques con tapetas | 56 14M 85 | 14M8556 | 10WF | FL182 | 56 | 249,55 | 246,76 | 256,0 | 150,0 | 207 | 102 | 102 | 32 | 25,00 |
| | | 64 14M 85 | 14M8564 | 10WF | FL184 | 64 | 285,21 | 282,41 | 296,0 | 150,0 | 240 | 102 | 102 | 32 | 30,50 |
| | senza flangia / without flanges / ohne Flanschen sans flasques / sin tapetas | 72 14M 85 | 14M8572 | 10A | - | 72 | 320,86 | 318,06 | - | 150,0 | 278 | 102 | 102 | 32 | 28,80 |
| | | 80 14M 85 | 14M8580 | 10A | - | 80 | 356,51 | 353,71 | - | 150,0 | 314 | 102 | 102 | 32 | 30,10 |
| | | 90 14M 85 | 14M8590 | 10A | - | 90 | 401,07 | 398,28 | - | 150,0 | 358 | 102 | 102 | 32 | 33,00 |
| | | 112 14M 85 | 14M8511 | 10A | - | 112 | 499,11 | 496,32 | - | 150,0 | 456 | 102 | 102 | 32 | 41,80 |
| | | 144 14M 85 | 14M8514 | 10A | - | 144 | 641,71 | 638,92 | - | 150,0 | 600 | 102 | 102 | 32 | 52,40 |
| | | 168 14M 85 | 14M8516 | 10A | - | 168 | 748,66 | 745,87 | - | 150,0 | 706 | 102 | 102 | 32 | 60,30 |
| | | 192 14M 85 | 14M8519 | 10A | - | 192 | 855,62 | 852,82 | - | 165,0 | 813 | 102 | 102 | 32 | 70,20 |
| | | 216 14M 85 | 14M8521 | 10A | - | 216 | 962,57 | 959,76 | - | 160,0 | 920 | 102 | 102 | 32 | 81,00 |

Pulegge dentate per cinghie HTD® / Timing belt pulleys HTD®
HTD® Zahnriemenscheiben / Poulies dentées HTD®
Poleas para correas dentadas HTD®



HTD® 14M-115

| Caratteristiche Features Merkmal Caractéristiques Características | | Codice Code symbol Bezeichnung Code symbole Numero de fabrica | Nostro codice Our code Unser Code Notre code Nuestro código | Tipo Type Typ Type Tipo | Codice flangia Flange code Bordscheiben Typ Code flasque Código brida | N. denti N. of teeth Zähnezahl N. bre de dents Cantidad de dientes | Dp | De | Df | Dm | Di | F | L | d | Peso Weight / Gewicht Poids / Peso Kg |
|---|--|---|---|-------------------------------------|---|--|--------|--------|-------|-------|-----|-----|-----|----|--|
| Acciaio / Steel / Stahl Acier / Acero | con flangia / with flanges mit Flanges / avec flasques con tapetas | 28 14M 115 | 14M1128 | 6F | FL153 | 28 | 124,78 | 122,12 | 128,0 | 100,0 | - | 133 | 148 | 32 | 9,20 |
| | | 29 14M 115 | 14M1129 | 6F | FL154 | 29 | 129,23 | 126,57 | 138,0 | 100,0 | - | 133 | 148 | 32 | 10,20 |
| | | 30 14M 115 | 14M1130 | 6F | FL154 | 30 | 133,69 | 130,99 | 138,0 | 100,0 | - | 133 | 148 | 32 | 11,20 |
| | | 32 14M 115 | 14M1132 | 6F | FL160 | 32 | 142,60 | 139,88 | 154,0 | 100,0 | - | 133 | 148 | 32 | 13,20 |
| | | 34 14M 115 | 14M1134 | 6F | FL166 | 34 | 151,52 | 148,79 | 160,0 | 100,0 | - | 133 | 148 | 32 | 14,80 |
| | | 36 14M 115 | 14M1136 | 6F | FL168 | 36 | 160,43 | 157,68 | 168,0 | 100,0 | - | 133 | 148 | 32 | 16,60 |
| | | 38 14M 115 | 14M1138 | 6F | FL172 | 38 | 169,34 | 166,60 | 183,0 | 120,0 | - | 133 | 148 | 32 | 19,20 |
| | | 40 14M 115 | 14M1140 | 6F | FL162 | 40 | 178,25 | 175,49 | 188,0 | 135,0 | - | 133 | 148 | 32 | 20,56 |
| | | 44 14M 115 | 14M1144 | 6F | FL175 | 44 | 196,08 | 193,28 | 211,0 | 140,0 | - | 133 | 148 | 32 | 21,93 |
| | | 48 14M 115 | 14M1148 | 6F | FL180 | 48 | 213,90 | 211,11 | 226,0 | 150,0 | - | 133 | 148 | 32 | 25,00 |
| | | 56 14M 115 | 14M1156 | 6F | FL182 | 56 | 249,55 | 246,76 | 256,0 | 150,0 | - | 133 | 148 | 32 | 27,50 |
| Ghisa / Cast iron Grauguss / Fonte Hierro fundido | senza flangia / without flanges / ohne Flanschen sans flasques / sin tapetas | 64 14M 115 | 14M1164 | 10WF | FL184 | 64 | 285,21 | 282,41 | 296,0 | 150,0 | 240 | 133 | 133 | 32 | 30,10 |
| | | 72 14M 115 | 14M1172 | 10A | - | 72 | 320,86 | 318,06 | - | 150,0 | 278 | 133 | 133 | 32 | 32,83 |
| | | 80 14M 115 | 14M1180 | 10A | - | 80 | 356,51 | 353,71 | - | 150,0 | 314 | 133 | 133 | 32 | 35,55 |
| | | 90 14M 115 | 14M1190 | 10A | - | 90 | 401,07 | 398,28 | - | 150,0 | 358 | 133 | 133 | 32 | 41,00 |
| | | 112 14M 115 | 14M1111 | 10A | - | 112 | 499,11 | 496,32 | - | 150,0 | 456 | 133 | 133 | 32 | 54,40 |
| | | 144 14M 115 | 14M1114 | 10A | - | 144 | 641,71 | 638,92 | - | 165,0 | 600 | 133 | 133 | 32 | 67,80 |
| | | 168 14M 115 | 14M1116 | 10A | - | 168 | 748,66 | 745,87 | - | 165,0 | 706 | 133 | 133 | 32 | 75,80 |
| | | 192 14M 115 | 14M1119 | 10A | - | 192 | 855,62 | 852,82 | - | 165,0 | 813 | 133 | 133 | 32 | 88,30 |
| | | 216 14M 115 | 14M1121 | 10A | - | 216 | 962,57 | 959,76 | - | 165,0 | 920 | 133 | 133 | 32 | 98,00 |

HTD® 14M-170

| Caratteristiche Features Merkmal Características Características | | Codice Code symbol Bezeichnung Code symbole Numero de fabrica | Nostro codice Our code Unser Code Notre code Nuestro código | Tipo Type Typ Type Tipo | Codice flangia Flange code Bordscheiben Typ Code flasque Código brida | N. denti N. of teeth Zähnezahl N. bre de dents Cantidad de dientes | Dp | De | Df | Dm | Di | F | L | d | Peso Weight / Gewicht Poids / Peso Kg |
|--|--|---|---|-------------------------------------|---|--|--------|--------|-------|-------|-----|-----|-------|----|--|
| Acciaio / Steel / Stahl Acier / Acero | con flangia / with flanges mit Flanges / avec flasques con tapetas | 28 14M 170 | 14M1728 | 6F | FL153 | 28 | 124,78 | 122,12 | 128,0 | 100,0 | - | 187 | 202 | 32 | 9,20 |
| | | 29 14M 170 | 14M1729 | 6F | FL154 | 29 | 129,23 | 126,57 | 138,0 | 100,0 | - | 187 | 202 | 32 | 10,20 |
| | | 30 14M 170 | 14M1730 | 6F | FL154 | 30 | 133,69 | 130,99 | 138,0 | 100,0 | - | 187 | 202 | 32 | 11,20 |
| | | 32 14M 170 | 14M1732 | 6F | FL160 | 32 | 142,60 | 139,88 | 154,0 | 100,0 | - | 187 | 202 | 32 | 13,20 |
| | | 34 14M 170 | 14M1734 | 6F | FL166 | 34 | 151,52 | 148,79 | 160,0 | 100,0 | - | 187 | 202 | 32 | 14,80 |
| | | 36 14M 170 | 14M1736 | 6F | FL168 | 36 | 160,43 | 157,68 | 168,0 | 100,0 | - | 187 | 202 | 32 | 16,60 |
| | | 38 14M 170 | 14M1738 | 6F | FL172 | 38 | 169,34 | 166,60 | 183,0 | 120,0 | - | 187 | 202 | 32 | 19,20 |
| | | 40 14M 170 | 14M1740 | 6F | FL162 | 40 | 178,25 | 175,49 | 188,0 | 135,0 | - | 187 | 202 | 32 | 20,56 |
| | | 44 14M 170 | 14M1744 | 6F | FL175 | 44 | 196,08 | 193,28 | 211,0 | 140,0 | - | 187 | 202 | 32 | 21,93 |
| | | 48 14M 170 | 14M1748 | 6F | FL180 | 48 | 213,90 | 211,11 | 226,0 | 150,0 | - | 187 | 202 | 32 | 25,00 |
| | | 56 14M 170 | 14M1756 | 6F | FL182 | 56 | 249,55 | 246,76 | 256,0 | 150,0 | - | 187 | 202 | 32 | 27,50 |
| 64 14M 170 | 14M1764 | 10WF | FL184 | 64 | 285,21 | 282,41 | 296,0 | 150,0 | 240 | 187 | 187 | 32 | 30,10 | | |
| Ghisa / Cast iron Grauguss / Fonte Hierro fundido | senza flangia / without flanges / ohne Flanschen sans flasques / sin tapetas | 72 14M 170 | 14M1772 | 10A | - | 72 | 320,86 | 318,06 | - | 150,0 | 278 | 187 | 187 | 32 | 32,83 |
| | | 80 14M 170 | 14M1780 | 10A | - | 80 | 356,51 | 353,71 | - | 150,0 | 314 | 187 | 187 | 32 | 35,55 |
| | | 90 14M 170 | 14M1790 | 10A | - | 90 | 401,07 | 398,28 | - | 150,0 | 358 | 187 | 187 | 32 | 41,00 |
| | | 112 14M 170 | 14M1711 | 10A | - | 112 | 499,11 | 496,32 | - | 150,0 | 456 | 187 | 187 | 32 | 54,40 |
| | | 144 14M 170 | 14M1714 | 10A | - | 144 | 641,71 | 638,92 | - | 165,0 | 600 | 187 | 187 | 32 | 67,80 |
| | | 168 14M 170 | 14M1716 | 10A | - | 168 | 748,66 | 745,87 | - | 165,0 | 706 | 187 | 187 | 32 | 75,80 |
| | | 192 14M 170 | 14M1719 | 10A | - | 192 | 855,62 | 852,82 | - | 165,0 | 813 | 187 | 187 | 32 | 88,30 |
| | | 216 14M 170 | 14M1721 | 10A | - | 216 | 962,57 | 959,76 | - | 165,0 | 920 | 187 | 187 | 32 | 98,00 |

Barre dentate HTD® / HTD® Standard toothed bars

HTD® Standard Zahnriemenstangen / Barreaux dentés standard HTD®

Barras dentadas de serie HTD®

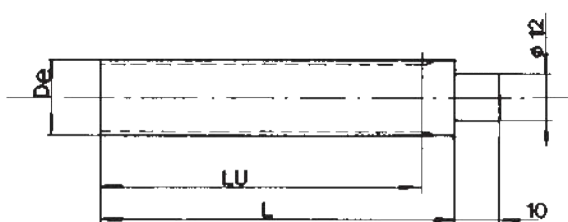
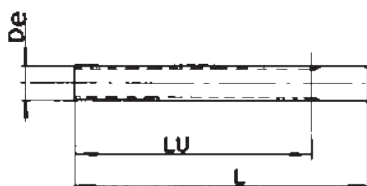
Materiale:
alluminio 6082 T6
UNI 9006/4 adatto al
trattamento anodico

Material:
aluminium 6082 T6
UNI 9006/4 suitable for
anodic treatment

Werkstoff:
aluminium 6082 T6
UNI 9006/4 geeignet für
anodischen oxydation

Matière:
aluminium 6082 T6
UNI 9006/4 apte au
traitement anodique

Material:
aluminio 6082 T6
UNI 9006/4 apto para la
oxidación anodica



HTD® 3M

| Codice Code symbol Bezeichnung Code symbole Numero de fabrica | Nostro codice Our code Unser Code Notre code Nuestro codigo | N. denti N. of teeth Zähnezahl N. bre de dents Cantidad de dientes | Dp | De | Lu | L |
|---|---|--|-------|-------|-----|-----|
| 9 3M | B03M009 | 9 | 8,59 | 7,83 | 75 | 100 |
| 10 3M | B03M010 | 10 | 9,55 | 8,79 | 75 | 100 |
| 11 3M | B03M011 | 11 | 10,50 | 9,74 | 75 | 100 |
| 12 3M | B03M012 | 12 | 11,46 | 10,70 | 100 | 125 |
| 13 3M | B03M013 | 13 | 12,41 | 11,65 | 100 | 125 |
| 14 3M | B03M014 | 14 | 13,37 | 12,61 | 100 | 125 |
| 15 3M | B03M015 | 15 | 14,32 | 13,56 | 100 | 125 |
| 16 3M | B03M016 | 16 | 15,28 | 14,52 | 125 | 155 |
| 17 3M | B03M017 | 17 | 16,23 | 15,47 | 125 | 155 |
| 18 3M | B03M018 | 18 | 17,19 | 16,43 | 125 | 155 |
| 19 3M | B03M019 | 19 | 18,14 | 17,38 | 125 | 155 |
| 20 3M | B03M020 | 20 | 19,10 | 18,34 | 150 | 165 |
| 21 3M | B03M021 | 21 | 20,05 | 19,29 | 150 | 165 |
| 22 3M | B03M022 | 22 | 21,01 | 20,25 | 150 | 165 |
| 23 3M | B03M023 | 23 | 21,96 | 21,20 | 150 | 165 |
| 24 3M | B03M024 | 24 | 22,92 | 22,16 | 150 | 165 |
| 25 3M | B03M025 | 25 | 23,87 | 23,11 | 150 | 165 |
| 26 3M | B03M026 | 26 | 24,83 | 24,07 | 150 | 165 |
| 27 3M | B03M027 | 27 | 25,78 | 25,02 | 150 | 165 |
| 28 3M | B03M028 | 28 | 26,74 | 25,98 | 150 | 165 |
| 29 3M | B03M029 | 29 | 27,69 | 26,93 | 150 | 165 |
| 30 3M | B03M030 | 30 | 28,65 | 27,89 | 175 | 183 |
| 31 3M | B03M031 | 31 | 29,60 | 28,84 | 175 | 183 |
| 32 3M | B03M032 | 32 | 30,56 | 29,80 | 175 | 183 |
| 33 3M | B03M033 | 33 | 31,54 | 30,75 | 175 | 183 |
| 34 3M | B03M034 | 34 | 32,47 | 31,71 | 175 | 183 |
| 35 3M | B03M035 | 35 | 33,42 | 32,66 | 175 | 183 |
| 36 3M | B03M036 | 36 | 34,38 | 33,62 | 200 | 200 |
| 37 3M | B03M037 | 37 | 35,33 | 34,57 | 200 | 200 |
| 38 3M | B03M038 | 38 | 36,29 | 35,53 | 200 | 200 |
| 39 3M | B03M039 | 39 | 37,24 | 36,48 | 200 | 200 |
| 40 3M | B03M040 | 40 | 38,20 | 37,44 | 200 | 200 |
| 42 3M | B03M042 | 42 | 40,11 | 39,34 | 200 | 200 |
| 44 3M | B03M044 | 44 | 42,02 | 41,26 | 200 | 200 |
| 45 3M | B03M045 | 45 | 42,97 | 42,21 | 200 | 200 |
| 48 3M | B03M048 | 48 | 45,84 | 45,08 | 200 | 200 |
| 50 3M | B03M050 | 50 | 47,75 | 46,99 | 200 | 200 |
| 52 3M | B03M052 | 52 | 49,66 | 48,90 | 200 | 200 |
| 54 3M | B03M054 | 54 | 51,57 | 50,81 | 200 | 200 |
| 56 3M | B03M056 | 56 | 53,48 | 52,72 | 200 | 200 |
| 60 3M | B03M060 | 60 | 57,30 | 56,54 | 200 | 200 |
| 62 3M | B03M062 | 62 | 59,21 | 58,45 | 200 | 200 |
| 64 3M | B03M064 | 64 | 61,12 | 60,36 | 200 | 200 |
| 66 3M | B03M066 | 66 | 63,03 | 62,27 | 200 | 200 |
| 68 3M | B03M068 | 68 | 64,94 | 64,18 | 200 | 200 |
| 70 3M | B03M070 | 70 | 66,85 | 66,09 | 200 | 200 |
| 72 3M | B03M072 | 72 | 68,75 | 67,99 | 200 | 200 |

HTD® 5M

| Codice Code symbol Bezeichnung Code symbole Numero de fabrica | Nostro codice Our code Unser Code Notre code Nuestro codigo | N. denti N. of teeth Zähnezahl N. bre de dents Cantidad de dientes | Dp | De | Lu | L |
|---|---|--|--------|--------|-----|-----|
| 12 - 5M | B05M012 | 12 | 19,10 | 17,96 | 150 | 165 |
| 13 - 5M | B05M013 | 13 | 20,69 | 19,55 | 150 | 165 |
| 14 - 5M | B05M014 | 14 | 22,28 | 21,14 | 175 | 183 |
| 15 - 5M | B05M015 | 15 | 23,87 | 22,73 | 175 | 183 |
| 16 - 5M | B05M016 | 16 | 25,46 | 24,32 | 175 | 183 |
| 17 - 5M | B05M017 | 17 | 27,06 | 25,92 | 175 | 183 |
| 18 - 5M | B05M018 | 18 | 28,65 | 27,51 | 200 | 200 |
| 19 - 5M | B05M019 | 19 | 30,24 | 29,10 | 200 | 200 |
| 20 - 5M | B05M020 | 20 | 31,83 | 30,69 | 200 | 200 |
| 21 - 5M | B05M021 | 21 | 33,42 | 32,28 | 200 | 200 |
| 22 - 5M | B05M022 | 22 | 35,01 | 33,87 | 200 | 200 |
| 23 - 5M | B05M023 | 23 | 36,61 | 35,47 | 200 | 200 |
| 24 - 5M | B05M024 | 24 | 38,20 | 37,06 | 200 | 200 |
| 25 - 5M | B05M025 | 25 | 39,79 | 38,65 | 200 | 200 |
| 26 - 5M | B05M026 | 26 | 41,38 | 40,24 | 200 | 200 |
| 27 - 5M | B05M027 | 27 | 42,97 | 41,83 | 200 | 200 |
| 28 - 5M | B05M028 | 28 | 44,56 | 43,42 | 200 | 200 |
| 29 - 5M | B05M029 | 29 | 46,15 | 45,01 | 200 | 200 |
| 30 - 5M | B05M030 | 30 | 47,75 | 46,60 | 200 | 200 |
| 31 - 5M | B05M031 | 31 | 49,34 | 48,20 | 200 | 200 |
| 32 - 5M | B05M032 | 32 | 50,93 | 49,79 | 200 | 200 |
| 33 - 5M | B05M033 | 33 | 52,52 | 51,38 | 200 | 200 |
| 34 - 5M | B05M034 | 34 | 54,11 | 52,97 | 200 | 200 |
| 35 - 5M | B05M035 | 35 | 55,70 | 54,56 | 200 | 200 |
| 36 - 5M | B05M036 | 36 | 57,30 | 56,16 | 200 | 200 |
| 38 - 5M | B05M038 | 38 | 60,48 | 59,34 | 200 | 200 |
| 40 - 5M | B05M040 | 40 | 63,66 | 62,52 | 200 | 200 |
| 42 - 5M | B05M042 | 42 | 66,85 | 65,71 | 200 | 200 |
| 44 - 5M | B05M044 | 44 | 70,03 | 68,89 | 200 | 200 |
| 45 - 5M | B05M045 | 45 | 71,62 | 70,48 | 200 | 200 |
| 46 - 5M | B05M046 | 46 | 73,21 | 72,07 | 200 | 200 |
| 48 - 5M | B05M048 | 48 | 76,39 | 75,25 | 200 | 200 |
| 50 - 5M | B05M050 | 50 | 79,58 | 78,43 | 200 | 200 |
| 54 - 5M | B05M054 | 54 | 85,94 | 84,80 | 200 | 200 |
| 60 - 5M | B05M060 | 60 | 95,49 | 94,35 | 200 | 200 |
| 62 - 5M | B05M062 | 62 | 98,68 | 97,54 | 200 | 200 |
| 72 - 5M | B05M072 | 72 | 114,59 | 113,45 | 200 | 200 |